

360 XTRACTOR TOOL V3



User Manual

Table of Contents

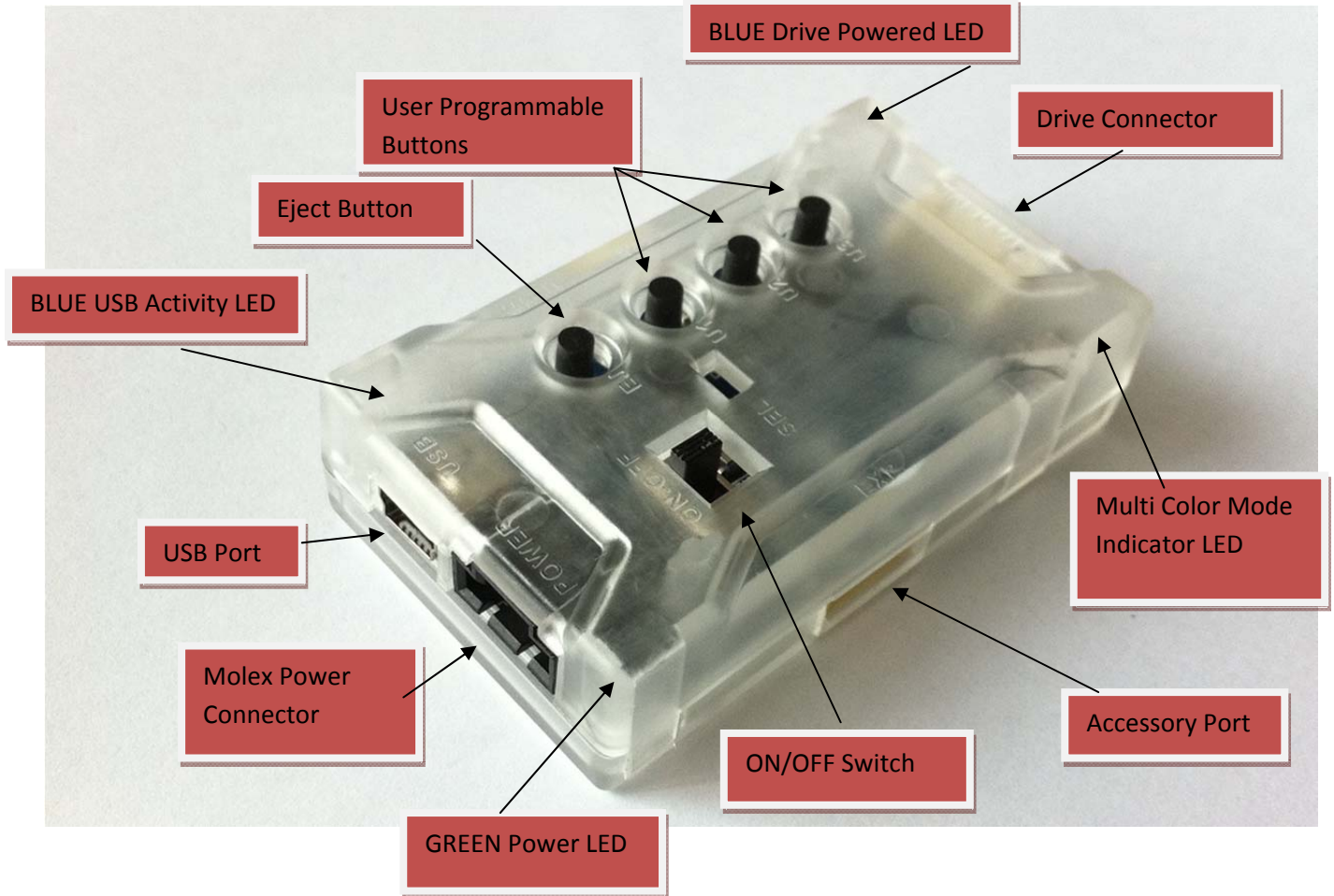
CHANGELOG:.....	3
Part 1 - Knowing your 360 Xtractor.....	4
Part 2 – Installing USB Driver.....	8
Part 3 – Basic Functionality.....	9
Part 4 – Updating XT3 (Bootloader Mode).....	10
Part 5 – Reassigning Buttons.....	13
Part 6 – 360 Lizard interaction.....	xx
Special Thanks To:.....	xx

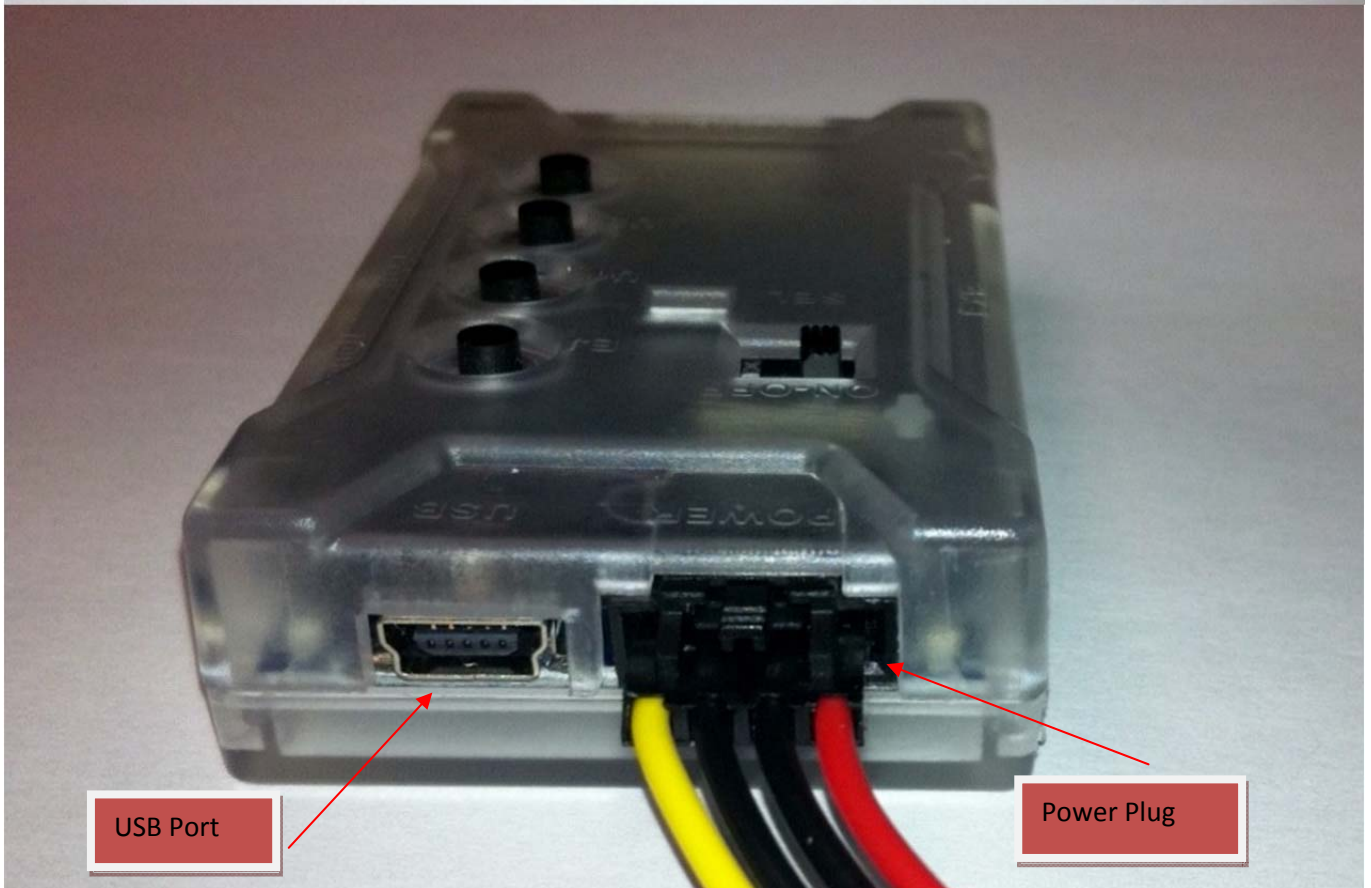
CHANGELOG:

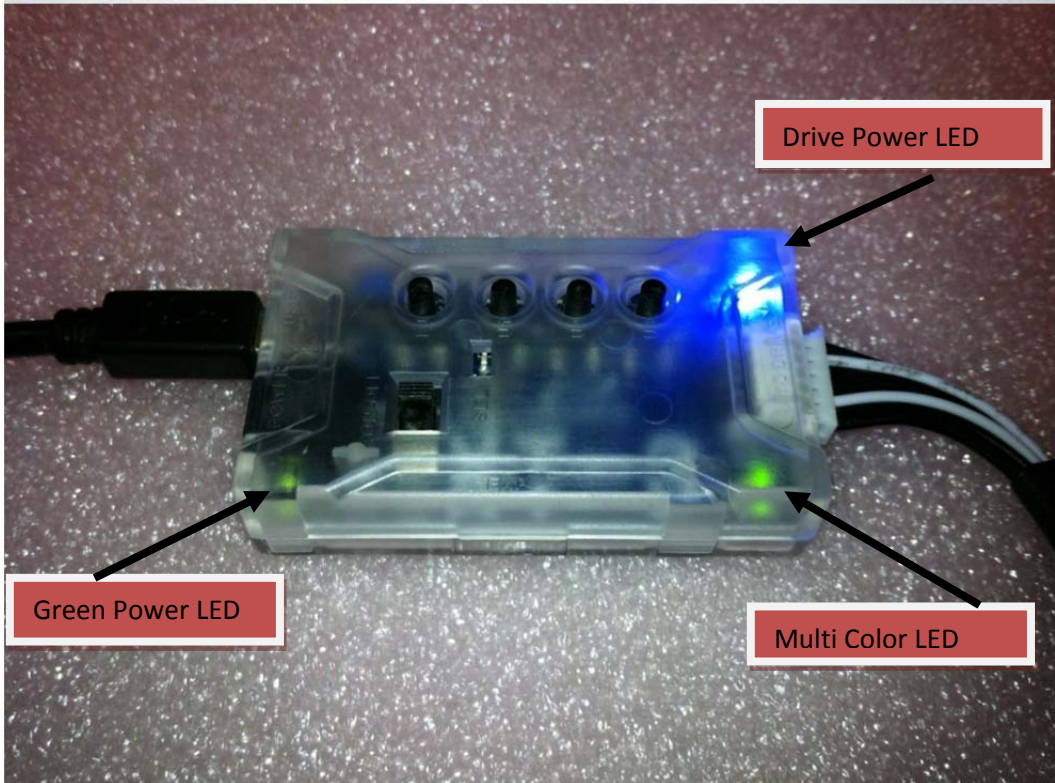
V3.0 – 23 June 2011 – Manual Launched

Part 1 - Knowing your 360 Xtractor

Thanks for choosing 360 Xtractor tool, we are proud to offer this high quality product which is a real innovation over past similar tools.







Description	
Eject Button	Provides Eject / Close tray function for the attached drive
PC Power Connector	Plugs to your PC Power Supply with a Molex connector
ON/OFF	Allows user to turn on / off the XT3
User Programmable Buttons	Default setting U1 – Liteon Half Tray U2 – Power Cycle U3 – Hitachi 0059 and below Mode B
Drive Connector	Plugs to the Power and Data cable going to the Xbox 360 Drive
Green Pwr Indicator	Green Visible indicator of the ON/OFF status of the device
Expansion Ports	Reserved for Expansion / Compatibility with future projects
USB Selector Jumper	Select to power Drive from Molex or USB port (*No eject with this mode) ** Required for USB Updating
USB Connector	Provides USB interface connection to PC and Power to drive (**No ejecting)
USB Activity Led	Blue Blinks when data pass thru the USB controller
Lizard Power Port	4 Pin connector to Power Maximus 360 Lizard
Multi Color LED	Default settings: Orange – Mode B Red – Half Tray Green – Power cycle actuated
Drive Power LED	Blue LED indicates drive is powered
Accessory Port	Reserved for future Product and 360 Lizard interaction

Part 2 – Setting up Xtractor v3 USB Port on Windows

Before you plug the Xtractor v3 to the Computer please download the USB drivers from the link below.

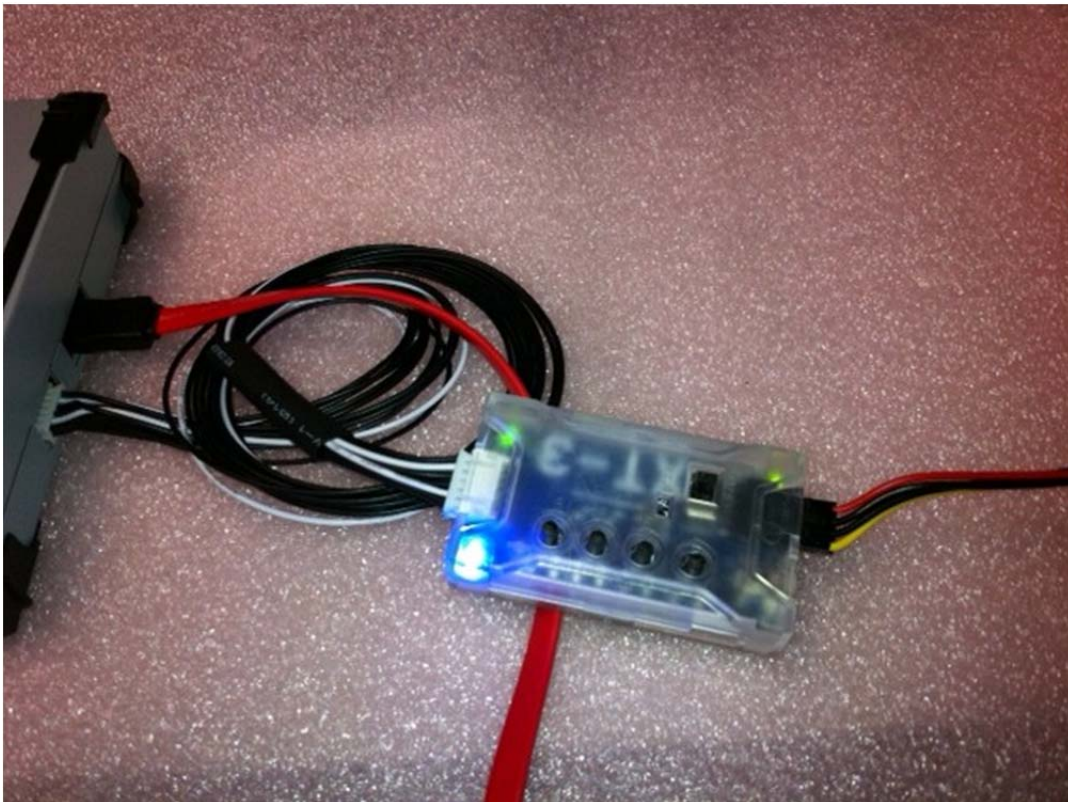
→ [USB DRIVERS – Click Here](#)

Just download it and execute it BEFORE plugging into USB port. The drivers are compatible with Windows 2000, Windows XP, Windows Vista, Windows 7 (32 and 64bit)

Part 3 – Basic Functionality

Powering Up Drives

This tool provides a safe regulated voltage supply to your drive, it can power up any brand of XBOX 360 Drive currently out, basically you only need to plug the cable to the Xbox 360 Drive and the other end to the Xtractor Tool and press the ON/OFF switch on the Xtractor. Take your time an extra care observing the proper polarization tabs on the drive the white wires should always face up



Eject / Close Tray

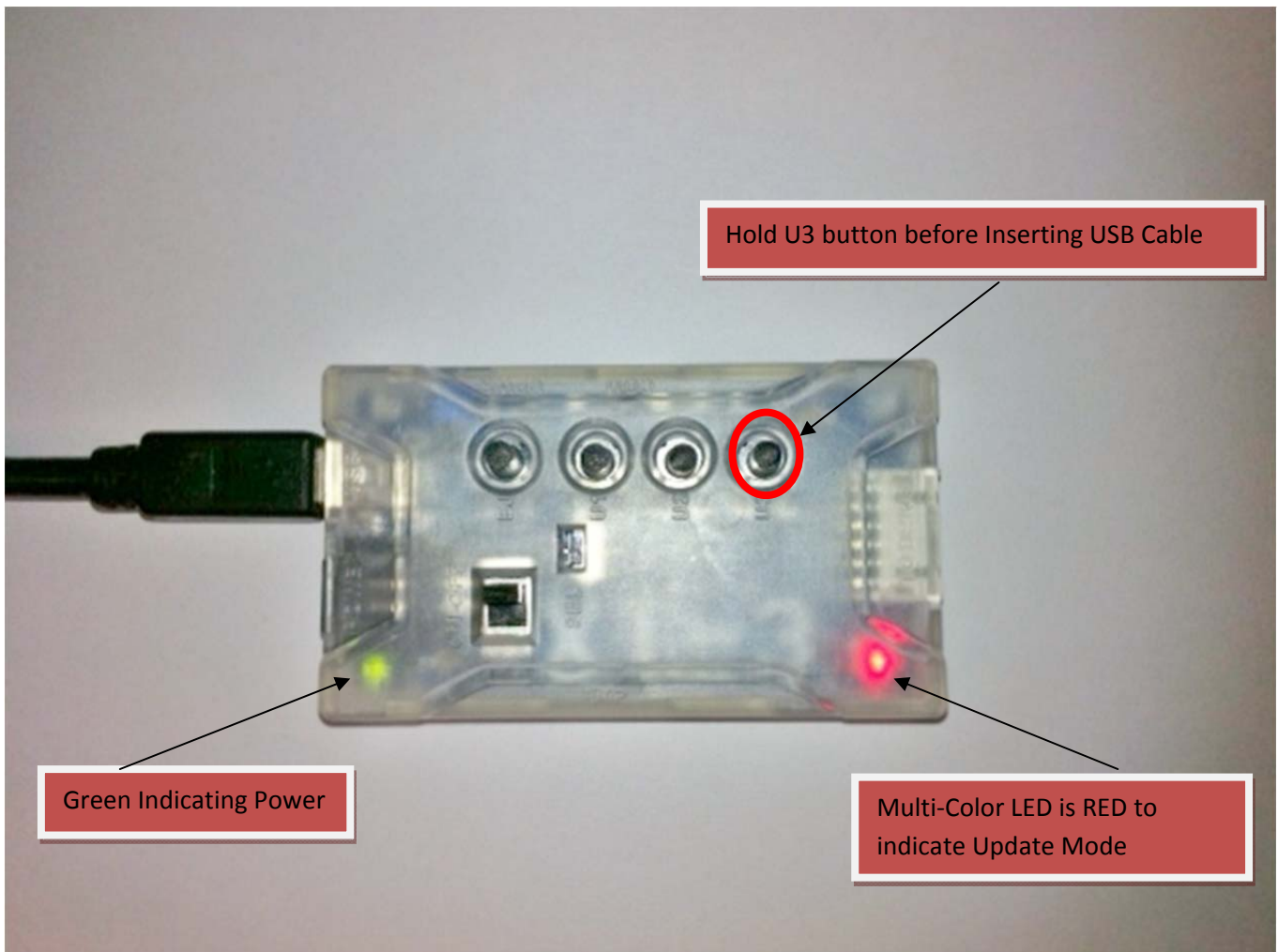
With the Eject/Close button you can open / close the drive tray

Hitachi Mode-B

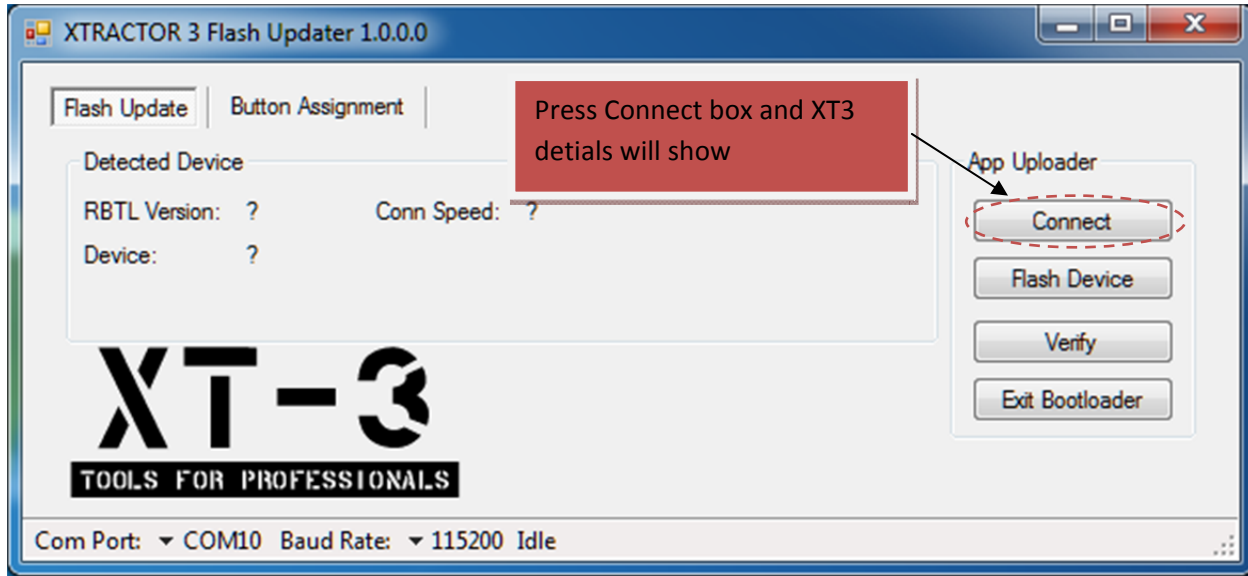
This is an feature for Hitachi Drives (0059 and below), it will take care of putting the drive automatically in Mode-B by pressing the button, you don't need to worry about having the switches on one or other state, they will just go into Mode-B automatically when you power on the Xtractor and press the button. This feature works for Hitachi Drives 0059 and below, for the Hitachi 78/79 it requires a hardware Mode-B as in using Maximus Lizard or 79Unlock Disc.

Part 4 – Updating XT3 (Bootloader Mode)

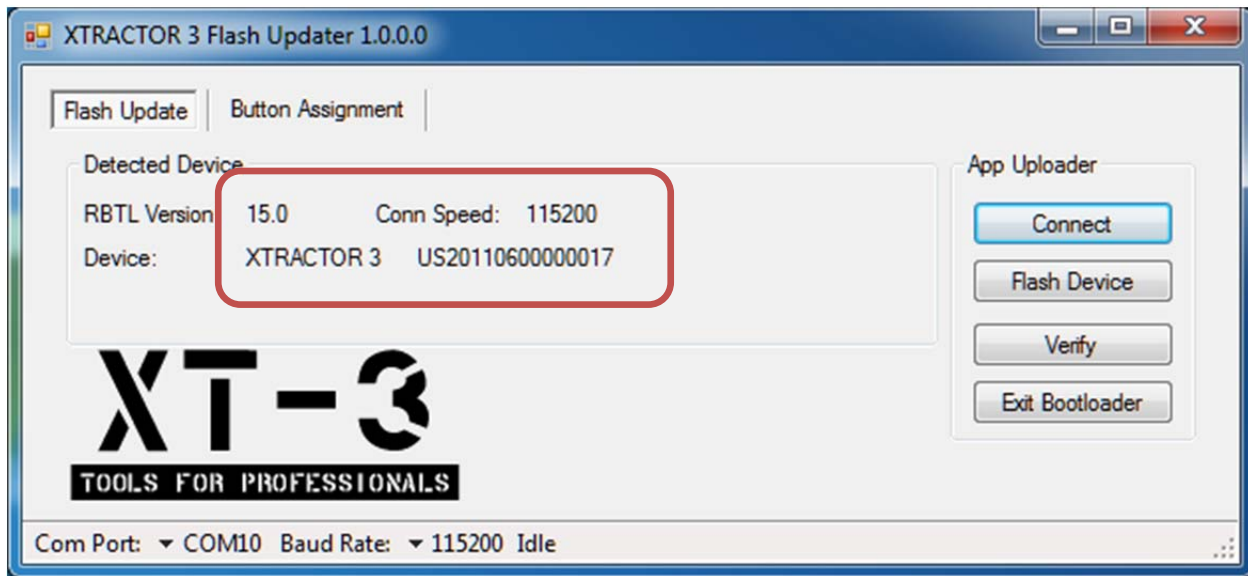
- A. To put XT3 into update mode.
1. Power Off Xtractor 3
 2. Ensure USB Jumper is in place.
 3. Press and hold U3 Button
 4. Plus in USB cable.
 5. Xtractor 3 should have 2 lights, RED for update mode and Green for Power.



Update using the XTRACTOR 3 Flash Updater Software:

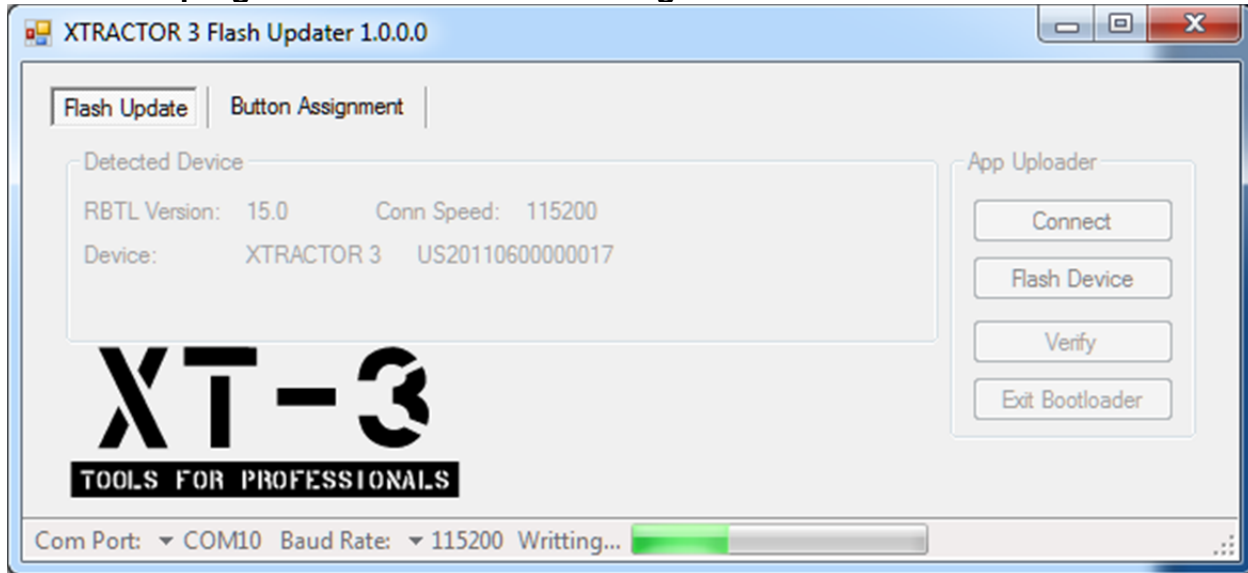


Will look like this:



Press the Flash device button and select the Firmware file, (ex: Fwv1.0.2.cex)

The Xtractor 3 will begin flashing to indicator data is being sent and the bottom progress bar will indicate writing:



Once the flash is completed a Verify Test OK windows will pop up:



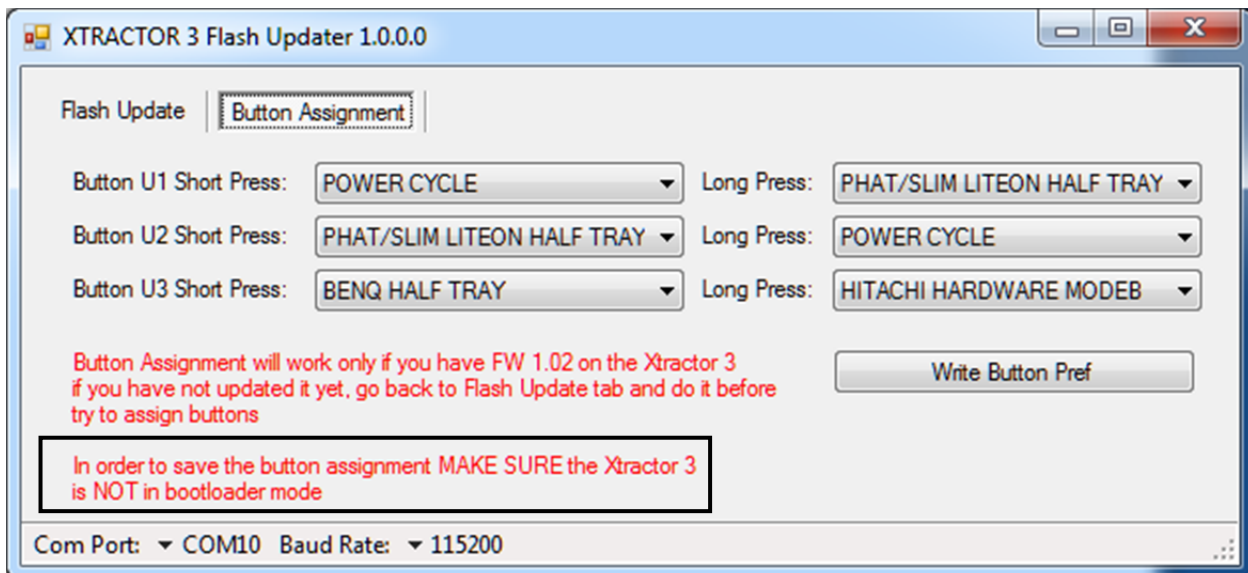
Click OK and your done.

Part 5 – Reassigning XT3 Buttons

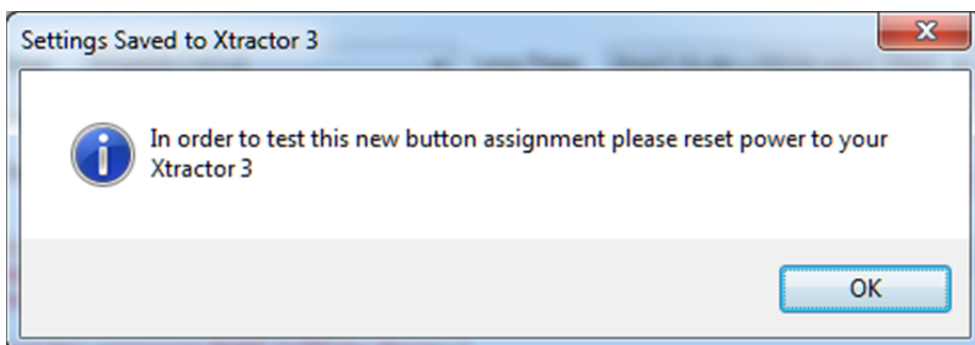
The onboard Controller will allow you to move set the buttons to your preference by following the steps below.

1. Open the XTRACTOR 3 Flash Updater software, DO NOT put Xtractor 3 in update mode and click on the “Button Assignment” Tab.

NOTE: Button Assignment will work only if you have FW 1.02 or above on the Xtractor 3, if you have not updated it yet, please go back to Flash Update Tab and perform the update.



2. Select the button Combo you wish to use and press the “Write Button Pref”
3. You will then see a Pop up Window as below



Special Thanks To:

We want to give thanks to several people who helped on the design/development of this product, on all stages it has been put extra care, time and dedication.

Thanks to

My Family: Please forgive me all the time I dedicate to this project instead of being with you.

VGC Repairs for all the programming and testing of our many products

Geremia for the Liteon Key Dump method

Redeath for Years of Support

C4Eva for the CFW files

Team Xecuter for pushing my harder to improve our products

End Customers who support our product over competitor's products.

Resellers for their support and trust